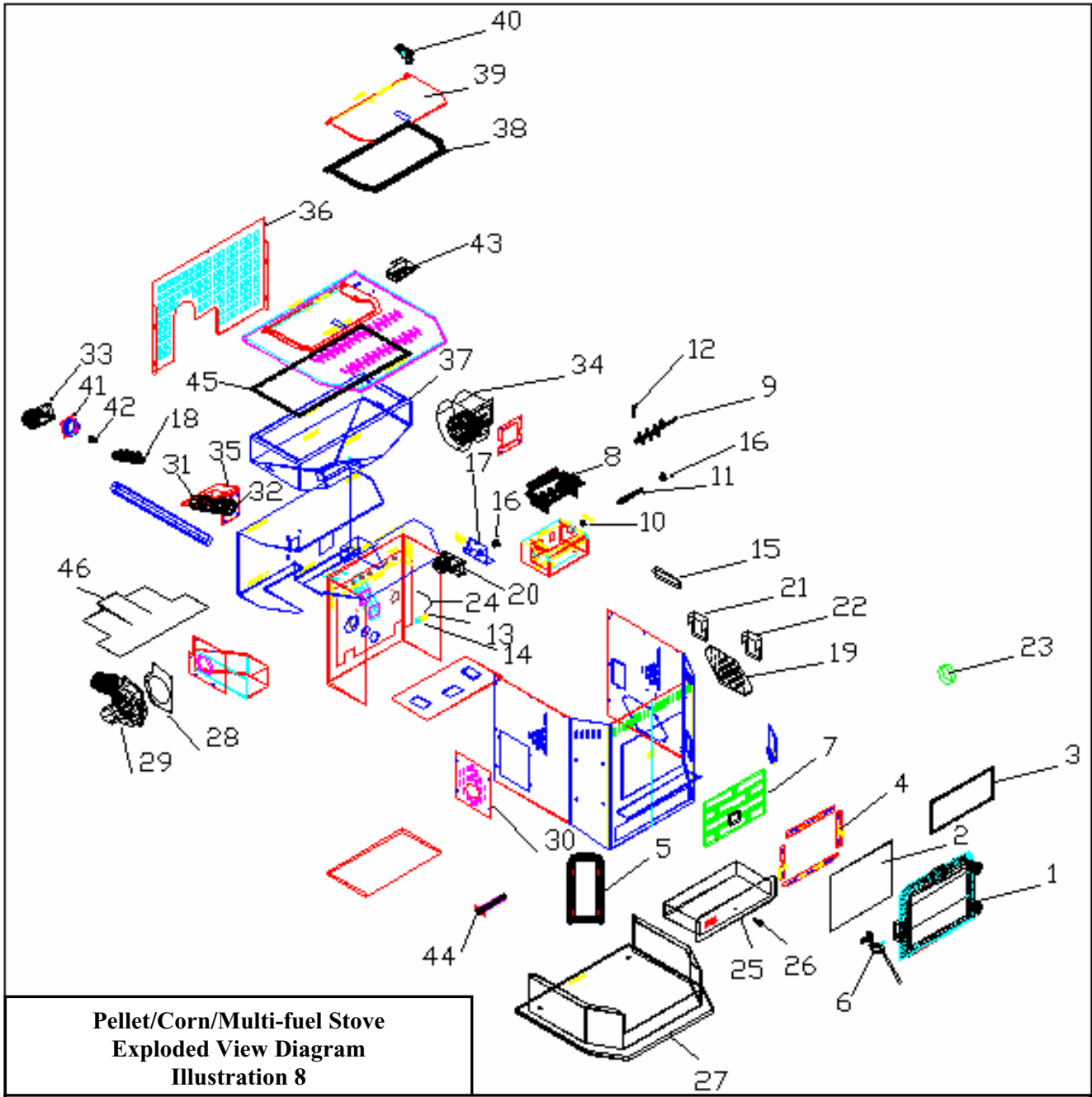


REPLACEMENT PARTS

| <u>ITEM</u> | <u>PART NUMBER</u> | <u>PART DESCRIPTION</u> |
|-------------|--------------------|---|
| 1 | CA-10 | Door |
| 2 | AC-G20 | Glass with Gasket H 11.5 X W 14.75 |
| 3 | AC-GGK | Glass Gasket Kit |
| 4 | AC-GSCPM | Glass Supports |
| 5 | CA-11 | Side Panel Castings |
| 6 | CA-DH | Cast Door Handle |
| 7 | CPM-CFB | Brick Fiber board |
| 8 | CPM-BP | Burnpot |
| 9 | CPM-FS | Fuel Stirrer |
| 10 | CPM-MC | Fuel Stirrer Collar ⁵ / ₈ " |
| 11 | CA-CPMDS | Fuel Stirrer Drive Shaft |
| 12 | R-FN-HP | Fuel Stirrer Hitch Pin |
| 13 | CPM-FST | Fuel Stirrer Tube 3" |
| 14 | R-FN-SF-2024-16 | Fuel Stirrer Bushings - 1" (2 each) |
| 15 | CPM-26CH | Fuel Stirrer Drive Chain |
| 16 | CPM-SP | Fuel Stirrer Sprocket (2 each) |
| 17 | CPM-SMB | Stirrer Motor Bracket |
| 18 | PU-AFUF | Auger |
| 19 | CPM-RCP | Right Side Cover Plate |
| 20 | PU-047040 | 1 RPM Stirrer Motor |
| 21 | CPM-CB07 | Control Board |
| 22 | CPM-CB07A | Aux Corn Control Board |
| 23 | CU-VS | Vacuum Switch |
| 24 | PU-VH | Vacuum Hose |
| 25 | AC-APCPM | Ash Pan |
| 26 | AC-03 | Ash Pan Knob |
| 27 | CPM-BR (L or E) | Base & Riser |
| 28 | PU-CBG | Exhaust Blower Gasket |
| 29 | PU-076002S | CPM Exhaust Blower |
| 30 | CPM-LCP | Left Side Cover plate |
| 31 | CA-ATUF | Auger Tube Assembly |
| 32 | PU-ATGUF | Auger Tube Gasket |
| 33 | CU-047042 | 2 RPM Auger Motor |
| 34 | PU-4C447 | Convection Air Blower |
| 35 | PU-HFGUF | Hopper Flange Gasket |
| 36 | CPM-RAP | Rear Access Panel |
| 37 | CPM-HOP | Hopper |
| 38 | AC-GGK | Hopper Lid Gasket |
| 39 | CPM-HL | Hopper Lid |
| 40 | PU-62-40-151-3 | Hopper Lid Latch |
| 41 | CA-AMPP | Auger Mounting Plate |
| 42 | CA-AC | Auger Coupler |
| 43 | AC-HLS | Hopper lid Switch |
| 44 | PU-CH6 | Igniter |
| 45 | PU-HLG | Hopper Top Gasket |
| 46 | CPM-PGB52 | Insulation Exhaust Tube Gasket |
| 47 | AC-SHN | Brushed Nickel Spring Handle (not shown) |
| 48 | AC-SH | Brass Spring Handle (not shown) |
| 49 | AC-DGKCPM | Door Gasket (not shown) |
| 50 | PU-GP | Guide Plate (not shown) |
| 51 | CU-RG | Rubber Gasket (not shown) |
| 52 | CPM-APG | Ash Pan Gasket (not shown) |
| 53 | CPM-AP | Air Pump (not shown) |

(See Item numbers on Exploded Diagram for part location)

10-CPM Exploded Diagram for Part Location



**Pellet/Corn/Multi-fuel Stove
Exploded View Diagram
Illustration 8**

Dimensions of your corn/pellet/multi fuel unit:

28"W x 33"H x 28"D

385 lbs.

(Approx. 18" height from floor to center of exhaust)

CAUTION: UNPLUG THE UNIT PRIOR TO ANY SERVICE WORK!