

England's Stove Works, Inc.

Pellet, Corn, Gas and Wood Stoves

P.O. Box 206 Monroe, VA 24574

www.englishstoves.com

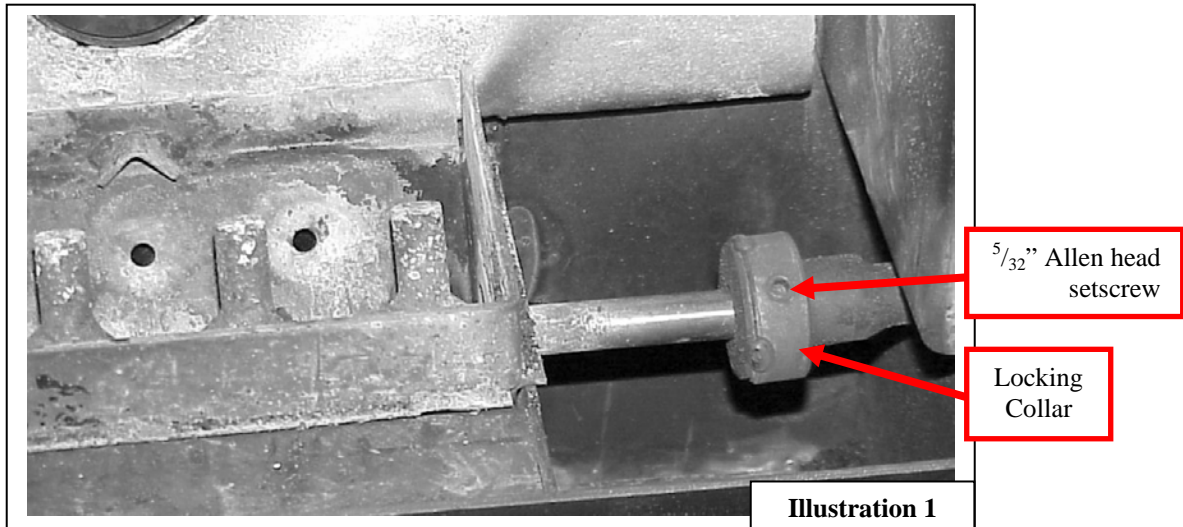
Phone: (800) 516-3636

Fax: (434) 929-4810

Corn Stove: Replacing Your Burn Pot, Stirrer and Brick Fiber Board

WARNING: STOVE MUST BE OUT (NO FIRE) AND COOLED DOWN BEFORE PROCEEDING.

BE SURE THE HOPPER IS EMPTY OF PELLETS/CORN BEFORE YOU BEGIN.



Burn Pot and Stirrer Removal

- While the unit is **COLD** and the unit is off, press and hold the Air On Temp button until the stirrer is at the "12:00" position. Unplug the stove and proceed to next step.
WARNING: ELECTRICAL SHOCK CAN OCCUR IF UNIT IS NOT UNPLUGGED.
- Loosen the Allen head setscrew (marked in **Illustration 1**).
- Slide the locking collar (also marked in **Illustration 1**) to the fire pot, lifting the fire pot and stirrer at the same time.
- The stirrer can be removed by sliding off the locking collar and lifting stirrer up and out of the fire box.
NOTE: When replacing the fire pot, notice there is a welded part that is always set toward the *back* of the fire box.

Fiber Board Removal and Replacement

- Remove the $\frac{5}{16}$ " screw shown in **Illustration 2**.
- The fiber board can now be removed from the stove.
- Insert the new fiber board and replace the screw in existing hole. Do not over tighten this screw as it will crush the fiber board.

Burn Pot and Stirrer Reinstall

- Reinstall Stirrer into Burn Pot and slide the locking collar on shaft.
- Replace Burn Pot and Stirrer mechanism in stove.
- Slide the locking collar back into place and tighten the Allen head setscrew.

